

WHAT IS TRANSIT-ORIENTED DEVELOPMENT (TOD) ?



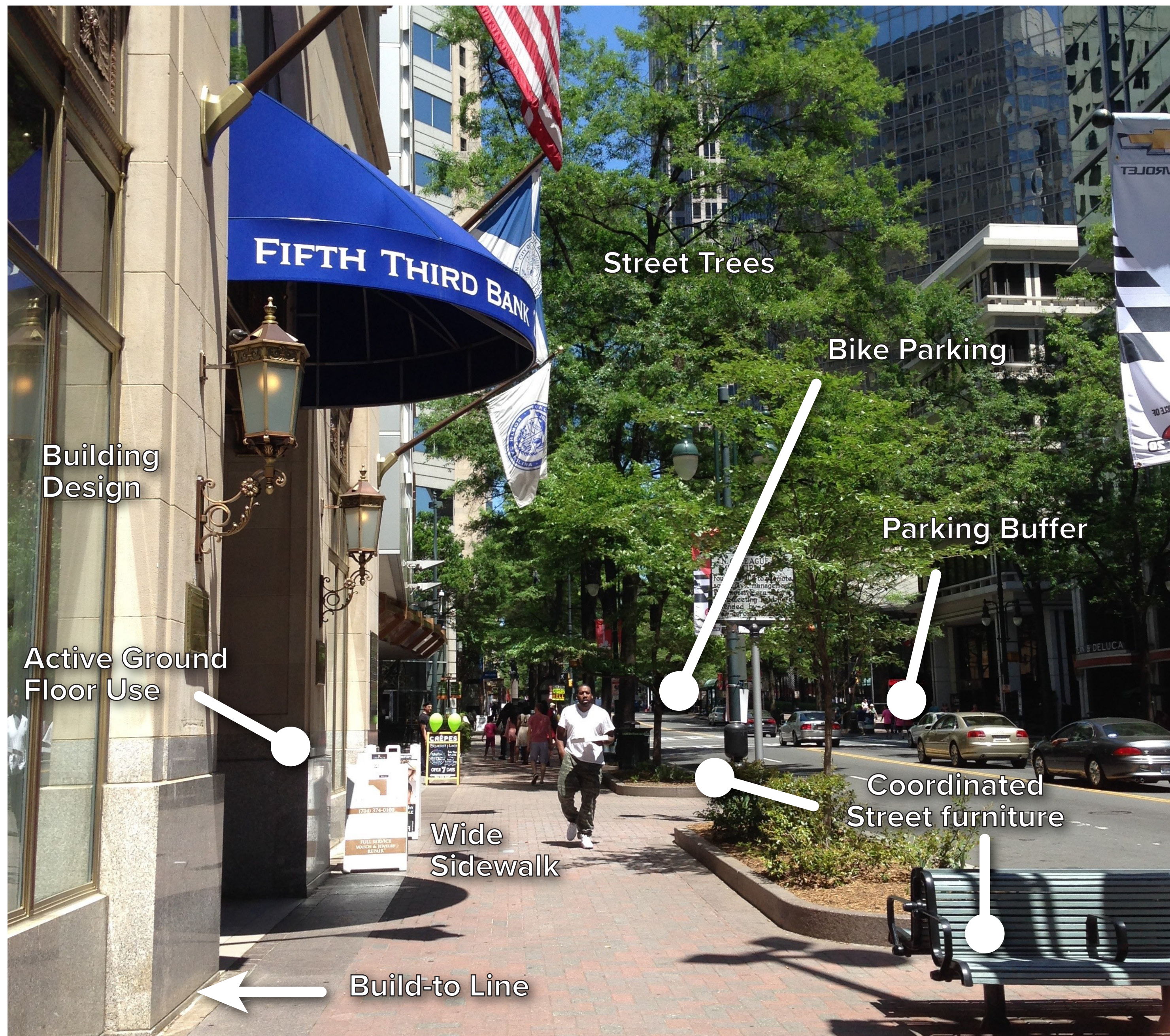
Transit-Oriented Development (TOD) | noun

tran-sit | ori-ent-ed | de-vel-op-ment
 \ tran(t)-sət \ 'or-ē-,en-təd \ di-'ve-ləp-mənt

Pedestrian-oriented, compact, mixed-use development that is centered on quality public transit. Typically includes a mix of housing, office, retail, neighborhood amenities, and other uses within walking distance of a transit station. Reduces the need for driving by creating compact, vibrant, walkable neighborhoods with convenient access to activities and destinations connected by transit.

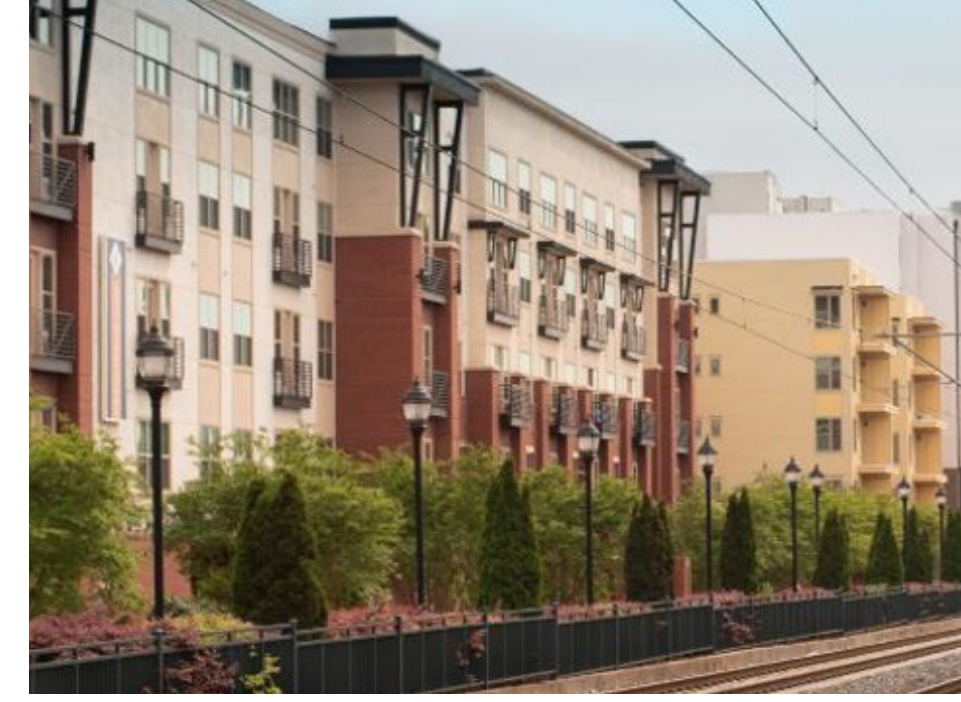
Creating Engaging Public Spaces

- 1 Include pedestrian-friendly elements that create vibrant and active spaces which lead to health, environmental and economic benefits.



Mixture of Uses

- 1 Clustering residential, retail, office, entertainment and civic uses around transit creates convenient access to goods and services.



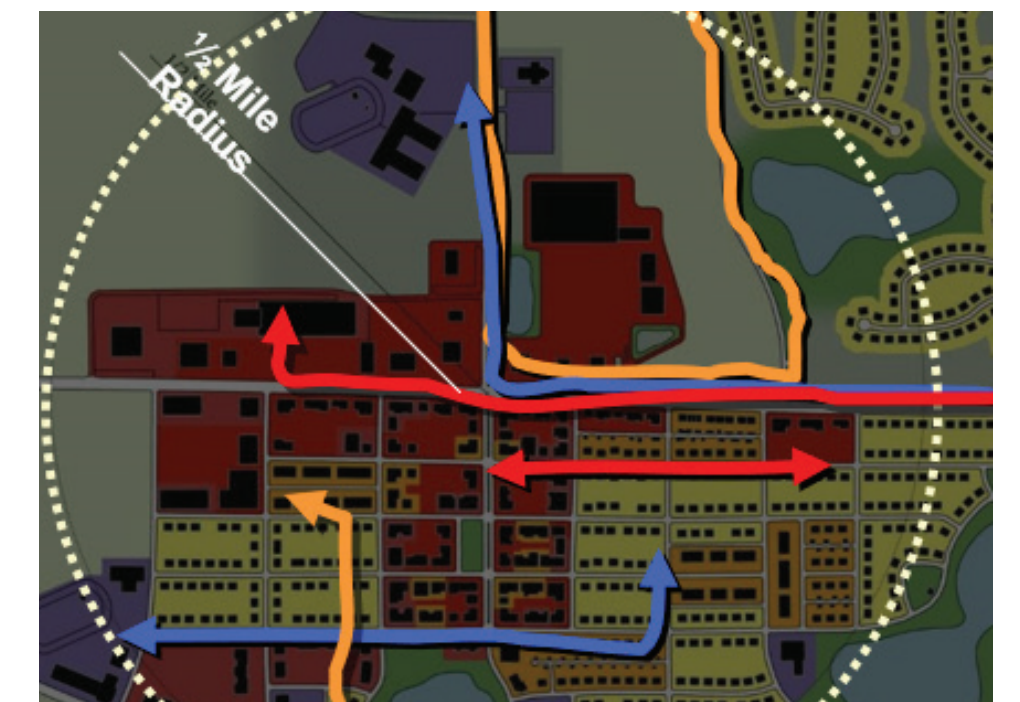
- 2 The proximity and mix allows short trips by foot or bike, reducing dependency on cars and increasing ridership for transit.



- 3 Mixed-use development also improves community vitality and creates vibrant and exciting destinations for both local residents and visitors.

Mobility & Circulation

- 1 Encourage safe and comfortable walking and bicycling trips.



- 2 A denser and tightly connected street network around a station creates a larger the capture area.



Equity

- 1 Ensure premium transit contributes to the equity of access to jobs, services, and housing.



- 2 Integrate affordable housing & existing jobs & businesses.